



# LANGUAGE, LAND & STORY

New Intaglio Works from Western Cape York

**27TH JANUARY - 28TH FEBRUARY 2015**

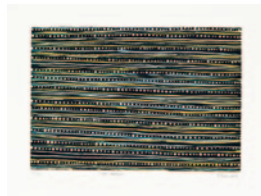
OPENING NIGHT: Friday 30th January / 6.00 - 9.00pm

Woolloongabba Art Gallery / 613 Stanley St, Woolloongabba



**PRINT  
SCHOOL**

Wei' Num  
Aboriginal  
And Torres  
Strait Islander  
Arts & Crafts  
Corporation



*Wet Season*  
**Margaret Mara**  
Etching on hanemuhle paper  
2011  
165 x 245



*Sultry Evening*  
**Margaret Mara**  
Etching on hahnemuhle paper  
2011  
165 x 245



*Mining Area*  
**Marsha Hall**  
Etching on hahnemuhle paper  
2011  
245 x 165



*Untitled*  
**Zoe de Jersey**  
Etching on hanemuhle paper  
2011  
245 x 165



*Giddy Giddy Seeds*  
**Zoe de Jersey**  
Etching on hahnemuhle paper  
2010  
245 x 165



*Tide Lines*  
**Daphne De Jersey**  
Etching on hahnemuhle paper  
2011  
245 x 165



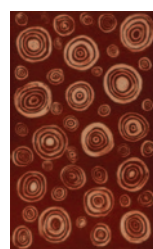
*Kiss Crosses*  
**Zoe de Jersey**  
Etching on hanemuhle paper  
2010  
495 x 165



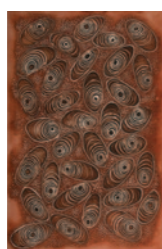
*Boggy Track (aka Bush Trek)*  
**Marsha Hall**  
Etching on hanemuhle paper  
2011  
495 x 165



*When em gor come mumma*  
**Tari Sagigi**  
Etching on hanemuhle paper  
2011  
495 x 165



*Oyster Season*  
**Marsha Hall**  
Etching on paper  
2014  
95 x 125



*Rock Oyster*  
**Daphne De Jersey**  
Etching, chin colle on paper  
2014  
740 x 490



*Spring*  
**Daphne De Jersey**  
Etching on paper  
2014  
490 x 240



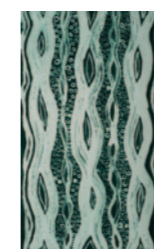
*All ya come small one*  
**Tari Sagigi**  
Etching on hanemuhle paper  
2010  
175 x 245



*Hidden Depths*  
**Marsha Mara**  
Etching on paper  
2014  
240 x 490



*Errans*  
**Marsha Hall**  
Etching on hahnemuhle paper  
2011  
245 x 165



*Luwang*  
**Marsha Hall**  
Etching on paper  
2014  
125 x 195



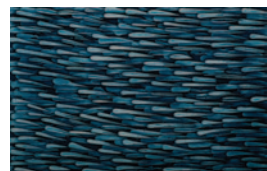
*Gweeni*  
**Daphne De Jersey**  
Etching, chin colle on paper  
2014  
490 x 240



*Fish Creek*  
**Daphne De Jersey**  
Etching on paper  
2014  
125 x 195



*Frangipani*  
**Zoe de Jersey**  
Etching on paper  
2014  
125 x 195



*Wet Season Rain*  
**Margaret Mara**  
Etching on paper  
2014  
195 x 125



*Life in the Swamp*  
**Margaret Mara**  
Etching on paper  
2014  
125 X 195



*Build Up*  
**Margaret Mara**  
Etching, chin colle on paper  
2014  
490 X 740

Pormpuraaw  
Art & Culture  
Centre  
Incorporated

Wik and Kugu  
Art Centre – Aurukun



*Rugby Players*  
**Eric Norman**  
Etching on paper  
2011  
335 x 365



*Rainbow Serpent*  
**Simon Norman**  
Etching on paper  
2012  
370 x 410



*Possums*  
**Hedley Karyuka**  
Etching on paper  
2014  
440 x 525



*Shell Spirit*  
**Christine Holroyd**  
Etching on paper  
2013  
330 x 460



*Spirit Shell*  
**Christine Holroyd**  
Etching on paper  
2013  
375 x 585



*Obulow*  
**Marlene Holroyd**  
Etching on paper  
2014  
700 x 530



*Bodymarkings*  
**Lex Namponan**  
Etching on paper  
2013  
155 x 235



*Ku*  
**Bevan Namponan**  
Etching on paper  
2013  
230 x 150



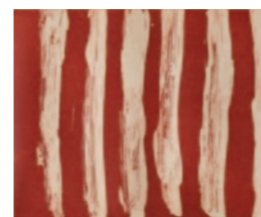
*Ku*  
**Garry Namponan**  
Three coloured etching on paper  
2013  
530 x 275



*Lawpole 'Thapa yogk'*  
**Roderick Yunkaporta**  
Two colour etching on paper  
2013  
530 x 275



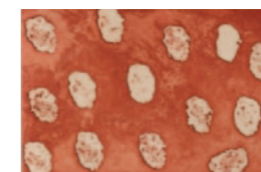
*Ku*  
**Garry Namponan**  
Three colour etching on paper  
2013  
235 x 275



*Bodymarkings*  
**Maurice Kepple**  
Etching on paper  
2013  
240 x 175



*Ku*  
**Leigh Namponan**  
2 coloured etching with ochre wipe  
2013  
235 x 275



*Bodymarkings*  
**Leigh Namponan**  
Etching on paper  
2013  
155 x 235



*Ku*  
**Bevan Namponan**  
Etching on paper  
2013  
155 X 235



*Lawpole 'Thapa yogk'*  
**Roderick Yunkaporta**  
Two colour etching on paper  
2013  
280 x 225

# The Artists

## AURUKUN / WIK & KUGU ART CENTRE



GARRY NAMPONAN



LEIGH NAMPONAN



LEX NAMPONAN



RODERICK YUNKAPORTA



BEVAN NAMPONAN



MAURICE KEPPLÉ

## WEI' NUM ABORIGINAL & TORRES STRAIT ISLANDER ARTS AND CRAFTS CORPORATION



TARI SAGIGI



DAPHNE DE JERSEY



MARSHA HALL



MARGARET MARA



CHRISTINE HOLROYD

## PORMPURA AW ART AND CULTURE CENTRE INCORPORATED



HEDLEY KARYUKA



ERIC NORMAN



MARLENE HOLROYD



SIMON NORMAN



CHRISTINE HOLROYD

# About the Exhibition

**GROUND** examines the progressive investigations of intaglio printmaking in Western Cape York since 2012

**Featuring 38 works by 16 artists based in Mapoon, Weipa, Naprunam, Aurukun and Pormpuraaw. Many works are being displayed for the first time.**

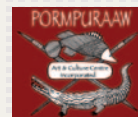
The driving impetus in the emergence of intaglio etching in the Western Cape is given focus by the Num Print School program; aiming to equip remote area artists with a range of etching techniques by which they may express their ideas. By utilising the medium of etching culturally significant subjects are re-energised, with new life breathed into stories about land, language and culture.

Developed by Wei'Num Arts Centre, the Num Print School program was established in an effort to develop other expressive pathways for artists familiar with linocut printing, woodcarving and painting. This travelling workshop enabled artists to design, develop and proof their works with reoccurring visits resulting in a large body of accomplished and insightful works. Ground presents the notion there is a broadly identifiable style of etching emerging in the Western Cape unified by the regions rich subject matter expressed with considerable technical prowess.

for more info, view the exhibition website: [weinumexhibits.com.au](http://weinumexhibits.com.au)



This project is supported by the Queensland Government's Indigenous Art Centre Funding Program through Arts Queensland, part of the Department of Science, Information Technology, Innovation and the Arts.



Woolloongabba Art Gallery