

An abstract collage artwork featuring overlapping, layered paper shapes in various colors including yellow, red, teal, grey, and black. The shapes are irregular and organic, creating a complex, layered composition. The text is positioned in the lower-left quadrant of the image.

RADICLE CUTS
Mitch Donaldson

The radicle is the embryonic root that first emerges from a seed during germination. My works begin with a seed in the form of a sheet of plywood, a meandering line cut with a scroll saw is its radicle. The resulting plywood forms undergo an open-ended process of re-painting and rearranging that drives the growth and evolution of the composition.

The mutability of this collage-based approach to painting expresses the biological processes and evolutionary forces that shape living things. Embracing chance and irresolution, these works occupy an ambiguous space between the natural and artificial and the animate and inanimate. Here materials are not merely passive objects but active agents in the evolution of the picture, generating meaning independent of my intentions and expressing an interconnection between the human and non-human.

Mitch Donaldson



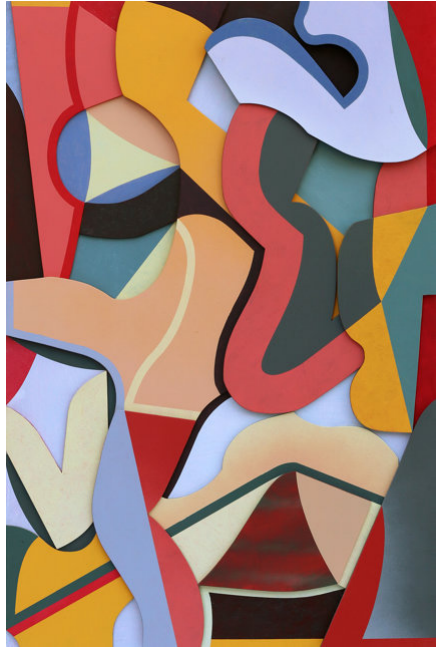
Seed 1 2020
Synthetic polymer on plywood, 46 × 30 cm



Seed 5 2020
Synthetic polymer on plywood, 46 × 30 cm



Radicle Cut 5 2020
Synthetic polymer on plywood, 61 × 41 cm



Radicle Cut 7 2020
Synthetic polymer on plywood, 61 × 41 cm



Environment 3 2020
Synthetic polymer on plywood, 80 × 53 cm



Radicle Cut 2 2020
Synthetic polymer on plywood, 61 × 41 cm



Front (detail): *Radicle Cut 4* 2020, Synthetic polymer on plywood, 61 × 41 cm

Exhibition dates
31 July - 29 August 2020

Woolloongabba Art Gallery

613 Stanley Street Woolloongabba Qld 4102 Australia ~ +61 7 3891 5551 ~ email@wag.com.au