

CANE COAST



JOHN HOCKINGS

Late in 2020, my wife and I left our place near Fraser Island and headed north, with boat in tow, to do some fly fishing and collect ideas for my next paintings. We ended up being away for five weeks with some extended time around Turkey Beach and even more around Hinchinbrook and the Palm Islands group.

These days all this is cane country mainly, caught between the dividing range to the west and the coastal edge of reef and islands, criss-crossed by a million creeks, rivers and estuaries. This is no longer pristine nature by any means, though that peeks through when it can. Mainly it's agricultural land, bright and colourful, with its raw green canefields and deep red and deep brown soils. And out to the east float hazy islands, silhouetted in the humid and cloud-strewn air of the hot tropics.

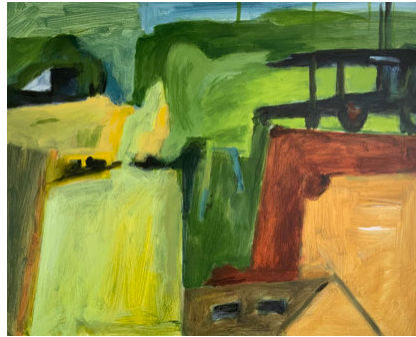
For those not in the know, both landscapes, the land and the sea, are meshed with all kinds of mysterious paraphernalia associated with the industries they contain – farm machinery, cane tramways, giant sheds and wharves, trucks and trawlers, windmills and chimneys.

The paintings which have been coming out of this trip draw on these intersections of natural landscape and human intervention. They don't come from sketches or reflect actual viewpoints. Rather they are re-assemblies of things which have appealed or are remembered.

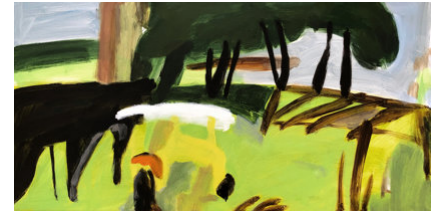
JOHN HOCKINGS 2021



Canefield With Water Crate, 60 × 75 cm
\$2,400



Canefield With Dark Shed, 60 × 75 cm
\$2,400



Canefield With Tractor, 40 × 80 cm
\$1,800



Canefield With Tramway, 30 × 60 cm
\$1,100



Rolling Canefields With Floating Cloud, 60 × 75 cm
\$2,400



Canefield With Storm, 40 × 80 cm
\$1,800



Exit From Lucinda, 40 × 80 cm
\$1,800



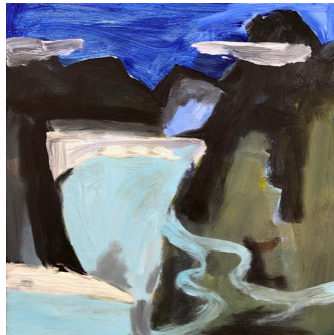
Up Hinchinbrook Passage, 60 × 75 cm
\$2,400



Canefield With Cane Wagons, 40 × 80 cm
\$1,800



Hinchinbrook Passage With Floating Clouds, 40 × 80 cm
\$1,800



Hinchinbrook Mudflats, 40 × 40 cm
\$1,000



Floating Islands With Jetty, 60 × 120 cm
\$3,800



Islands With Big Estuary, 40 × 40 cm
\$1,000



Estuary Tidal Run, 50 × 60 cm
\$1,400



Palm Islands With Big Wharf, 60 × 120 cm
\$3,800



Lucinda Wharf, 60 × 60 cm
\$2,000



Ebb Tide Hinchinbrook Passage, 60 × 80 cm
\$2,500



Big Wharf, 60 × 120 cm
\$3,800



Waiting For The Tide, 40 × 80 cm
\$1,800



Lucinda Flats, 40 × 80 cm
\$1,800



Dark Island With Estuary, 60 × 75 cm
\$2,400



Hinchinbrook And Jetty, 60 × 75 cm
\$2,400



Canefield And Running Creek, 60 × 75 cm
\$2,400



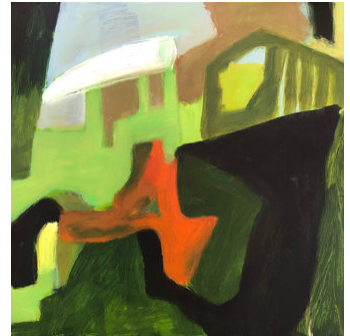
Trawler At Station Hill K'gari, 40 × 80 cm
\$1,800



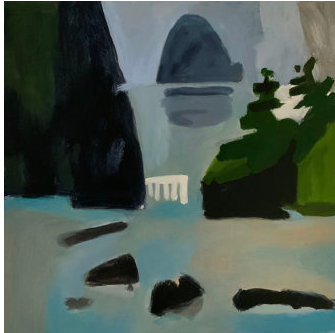
Jetty In The Straits, K'gari, 60 × 120 cm
\$3,800



Boat Off K'gari, 40 × 80 cm
\$1,800



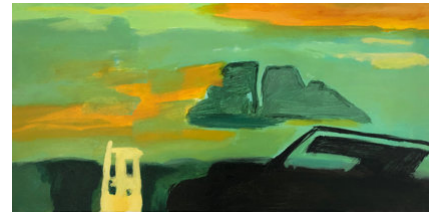
Canefield With Large Tractor, 60 × 60 cm
\$2,000



Islands In A Calm Sea, 60 × 60 cm
\$2,000



Water's Edge, 60 × 75 cm
\$2,400



Canefield With Dark Shadows, 40 × 80 cm
\$1,800



Canefield With Chimneys, 60 × 75 cm
\$2,400

front image: *Hinchinbrook Island With Passing Clouds*, 40 × 80 cm \$1,800

All paintings are acrylic on canvas

Exhibition dates: 3 July – 7 August 2021

Woolloongabba Art Gallery

613 Stanley Street Woolloongabba Qld 4102 Australia ~ +61 7 3891 5551 ~ email@wag.com.au