

Cut From

SUSIE HANSEN



MAUREEN HANSEN

The Same Clay

front cover images:

(left) Susie Hansen, *Lady Pan with Grizzly (1 & 2)* 2023
White Raku fired to 1100, 45 × 20 × 25 cm each

(right) Maureen Hansen, *Japanese Drip* 2023
Oil on canvas, 41 × 31 cm

CUT FROM THE SAME CLAY

This exhibition brings together twin sisters Susie and Maureen Hansen. The component elements consist of Susie's 'Kiln Confidential' and Maureen's 'Grounded'.

"Community, Culture and Clay" is reflected in the art of ceramicist, Susie Hansen as an exhibiting artist and teacher of drawing, sculpture and ceramics in Queensland and Victoria since 1988.

Susie Hansen's clay sculptures echo the stylings of American Funk Pottery and the humour and satiric observations of the beat writers of 1960's–70's America.

Subjects merge into folkloric fantasy figures such as – "*Lady Pan with Grizzly*" (1 & 2). A metaphor for a relationship dynamic.

Many works focus on the duality of being a twin such as – "*Twin Swimmers*" and invite the viewer to battle with the contradictions of comparison.

"*Fighting Prawns*" – series 2 is a parody of this complexity and is derived from sketches of street puppets in the artist's diary drawings from a trip to Mexico in 1993.

Paintings in gouache such as "*Cloud-Busting*" illustrate the narrative from "The Book of Dreams", the inspiration for Kate Bush's song of the same name.

"Working in clay strengthens my resolve to create the unimaginable through the process of sculpting, finishing, glazing and firing. It refines my technique in design to add gravity and expression to the rendering of figures and faces." – *Susie Hansen*

"When humanity searches for meaning in our history, we begin by excavating the earth to find shards of pottery or clay brick foundations. The city of Pompeii holds flat coloured murals of urns and amphora. In each millennia the way of life is described by the ceramic objects in daily use.

"Even today styles of the 20th century are distinctly recognisable by the style of ceramic production.

"*Japanese Drip, 60's Ceramic, Music* are all paintings describing the harmony of these objects. The figure was sculpted by me in 1998 for "Eva Luna" exhibition at Doggett St Studios.

"The Gaelic tradition speaks of kinship with mother earth, 'We are souls in clay form – Your body is your clay home; your body is the only home that you have in this universe' (John O'Donahue).

"Grounded is an exhibition celebrating that idea of belonging to the earth and the idea of creating from Home in order to take flight in ideas, create new pictures I have to feel grounded and the images of my environment celebrate the light of my Brisbane Home." – *Maureen Hansen*



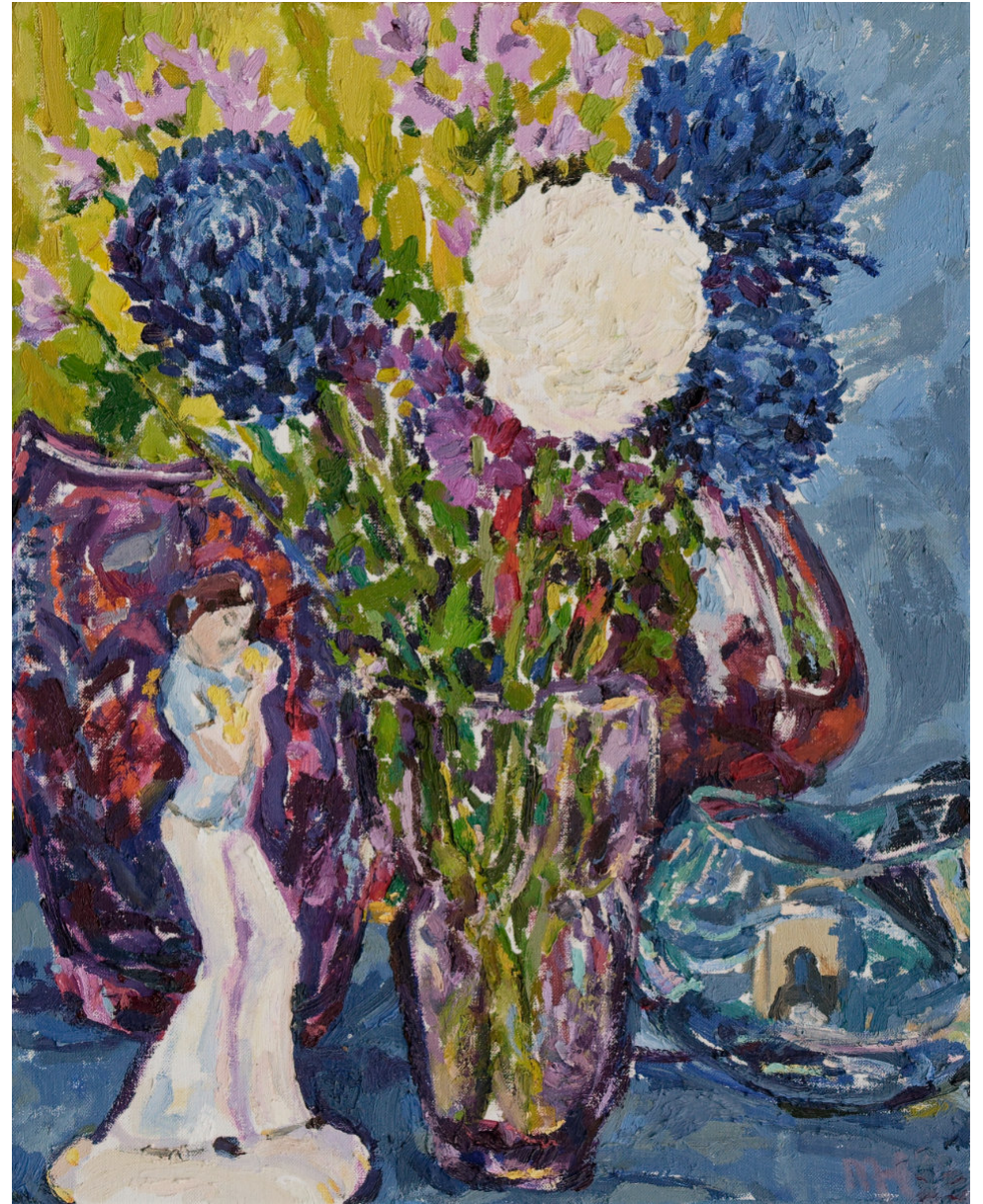
Susie Hansen, *Bareback Giraffes - The Trilogy 2023* (Set of 3)
BRT glaze fired to 1100, 30 × 25 × 15 cm



Maureen Hansen, *Old Urns 2023*
Oil on canvas, 36 × 46 cm



Susie Hansen, *Fighting Prawns series 2* 2023 (Set of 2)
BRT clay and glaze fired to 1100, 50 × 50 × 30 cm



Maureen Hansen, *70's Figure and Blue Flowers* 2023
Oil on linen, 51 × 41 cm



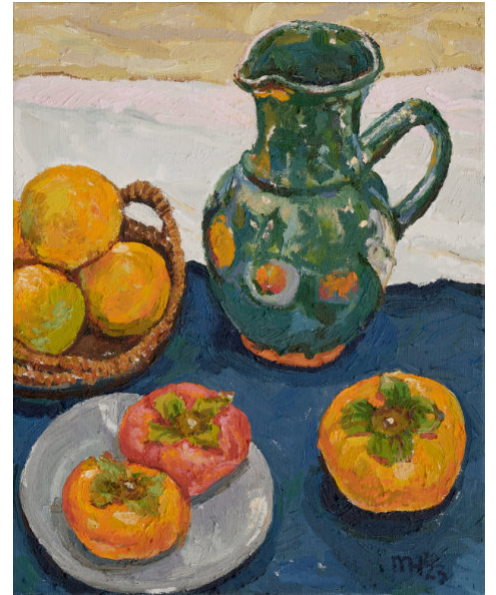
Susie Hansen
Blonde Opera Singer in Bjork Swan Dress 2023
BRT glaze fired to 1100, 30 × 15 × 10 cm



Susie Hansen
Twin Swimmers 2023
BRT glaze fired to 1100, 40 × 15 × 15 cm



Maureen Hansen
Geranium and Pea Plant 2023
Oil on canvas, 61 × 31 cm



Maureen Hansen
Green Jug and Pomegranates 2023
Oil on canvas, 51 × 41 cm



Susie Hansen
Orange Johnny and Susie 2023
BRT glaze fired to 1100, 35 × 35 × 20 cm



Susie Hansen
Tan Matt Hound 2023
BRT glaze fired to 1100, 25 × 15 × 10 cm



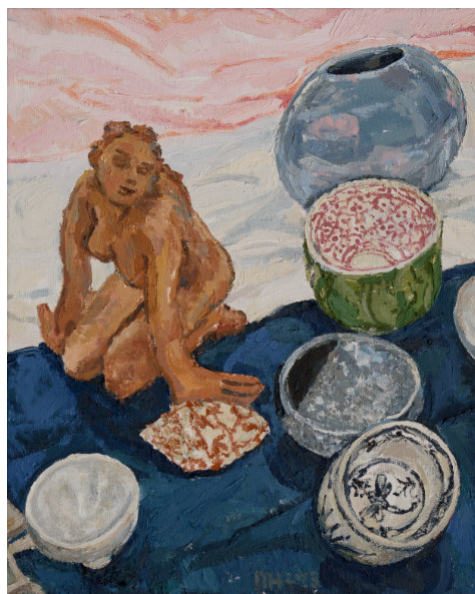
Maureen Hansen, *Rainy Dawn City* 2023
Oil on canvas, 26 × 51 cm



Maureen Hansen, *A Passing Beauty* 2014
Oil on canvas, 61 × 91.5 cm



Susie Hansen
Cloudbusting - outside on the hill 2023
Gouache on watercolour paper, 29.7 × 21 cm



Maureen Hansen
Music (Featuring 1998 Eva Luna Sculpture)
2023, Oil on canvas, 51 × 41 cm

Selected images from
Cut From The Same Clay

Exhibition dates
13 May – 17 June 2023

Woolloongabba Art Gallery

613 Stanley Street Woolloongabba Qld 4102 Australia ~ +61 7 3891 5551 ~ email@wag.com.au