



SAM BULLOCK
Darkside of the Mirror

SAM BULLOCK

Darkside of the Mirror

An exhibition exploring the dark side. A search for the shadow self, the darker side of human nature, the contradictions of darkness and light.

Rejecting the mask of social acceptance that alienates us from society because our thoughts can't change the reality of the world around us, even though it can change our thinking.

With paintings inspired by Swiss psychologist Carl Jung, the ideology of the shadow and shadow work, the embracing of one's dark-side, the tenderness and bitterness between lovers, seeing the darker side of humanity associated with war, genocide and the dangers of ethno-nationalism.

The exhibition is a projection of when lovers assert negative aspects of themselves onto you, having rejected the darker side of themselves and their shadow. It is about looking at yourself in the mirror, realising that you cannot run from your true nature, accepting yourself even if you don't meet the standards of the society you live in.

Also heavily influenced by Karl Marx and his theory of dialectical materialism which is grounded by absolutes within our own reality.

Cover image: *Darkside of the Mirror* 2024, Acrylic on canvas, 82 × 123 cm



Self-portrait with Alice in Wonderland 2024, Acrylic on canvas, 113.5 × 90 cm



Victor Jara, music of resistance 2024, Acrylic on canvas, 100.5 × 120 cm



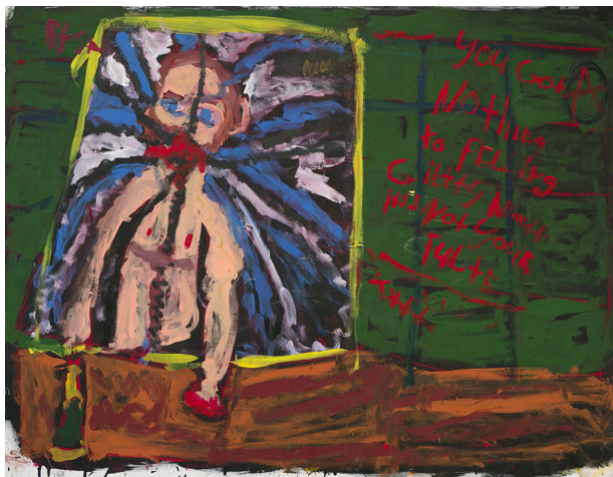
McGenocide, IDF Lovin' It 2024, Acrylic on canvas, 122.5 × 81.5 cm



Australia, Porto Rico of the South Pacific 2024, Acrylic on canvas, 86.5 × 101.5 cm



Angela hot summer night's passion 2024, Acrylic on canvas, 122 × 91.5 cm



Self-portrait in broken mirror 2024, Acrylic on canvas, 100 × 130 cm

A selection of artworks from the exhibition 'Darkside of the Mirror'.

Exhibition dates

5 November – 30 November 2024



Woolloongabba Art Gallery

613 Stanley Street Woolloongabba Qld 4102 Australia ~ +61 7 3891 5551 ~ email@wag.com.au