

The artwork is a vertical composition divided by a jagged, torn-paper-like vertical line. On the left side, a woman's face is depicted in a more realistic, though still stylized, manner. She has a golden crown with three points, blue hair, and red lips. Her expression is serious. On the right side, a face is depicted in a highly abstract, cubist style. This face is composed of various geometric shapes and a vibrant color palette including blue, red, yellow, green, and white. The eyes are large and almond-shaped, and the lips are red. The overall style is a blend of realism and abstraction.

ABSTRACTED

LINDA LEFTWICH

TROY CROOKS

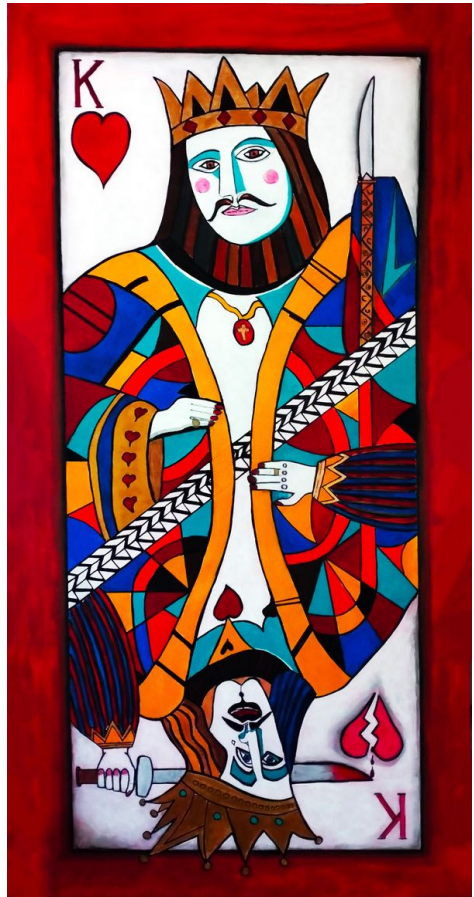
LINDA LEFTWICH

After decades of painting landscapes, I undertook further studies in Visual Arts at the University of Canberra, where I have discovered a passion for portraiture and abstraction.

This series of poker player characters was derived from my research into playing cards for my artwork of *The Suicide King* - King of Hearts.

It also resulted in the creation of two poker decks: *Cultural Fusion* where the Court cards represent both Oriental and European royals and heroic Knights. *Animal Kingdom* where endangered iconic animals are represented as hybrid royals.

These artworks represent that creative journey



The Suicide King (2024) Acrylic on canvas 180 x 90 cm



Queen of Hearts (2025) Acrylic on linen 80 x 99 cm



The Death Hand (2025) Acrylic on canvas 57 x 67 cm



The Gambler (2025) Acrylic on canvas 48 x 60 cm



Empress (2025) Acrylic on canvas 45 x 45 cm

TROY CROOKS

ABSTRACTED explores the complex terrain of the human psyche through the lens of Carl Jung's theories of self, ego and shadow. This body of work reflects a personal dialogue with the subconscious, guided by the Jungian belief that true psychological growth arises from confronting and integrating the hidden aspects of ourselves. The shadow, along with the anima and animus, acts as a mirror - revealing repressed emotions, unacknowledged traits, and projections that quietly shape how we engage with the world. These internal forces are visualized through abstraction, offering a non-literal space where the internal becomes external and the unconscious finds form.

Each piece in this exhibition is an invitation to introspection - a chance for the viewer to encounter aspects of their own inner world. The abstract language resists fixed meaning, allowing personal interpretation and projection to take the lead. Just as Jung's process of individuation calls for embracing contradiction and complexity, these works aim to hold tension between clarity and ambiguity, light and shadow.

My hope is that viewers don't just observe these works but feel themselves within them, discovering echoes of their own psychological journeys along the way.



Loss (2025) Acrylic on canvas 91 x 122 cm



Renewal (2025) Acrylic on canvas 91 x 122 cm



Impression (2025) Acrylic on canvas 91 x 122 cm



Heart Shaped Box Part 1, Part2 (2025) featuring

Reflective Through plinth with

Objective Shade 71 x 25 x 17 cm

Shade Objective 70.3 x 17 x 17 cm

LINDA LEFTWICH

Artist portfolio:

www.artworkarchive.com/profile/linda-leftwich

www.instagram.com/lindaleftwichart

TROY CROOKS

www.instagram.com/crooksstudioart24

www.facebook.com/troycrooks

A selection of artworks from the exhibition ***Abstracted***

Exhibition dates 19 August - 23 August 2025



Woolloongabba Art Gallery

613 Stanley Street, Woolloongabba Qld 4102 - 61 7 38915551 - email@wag.com.au